

The Rule of Right.

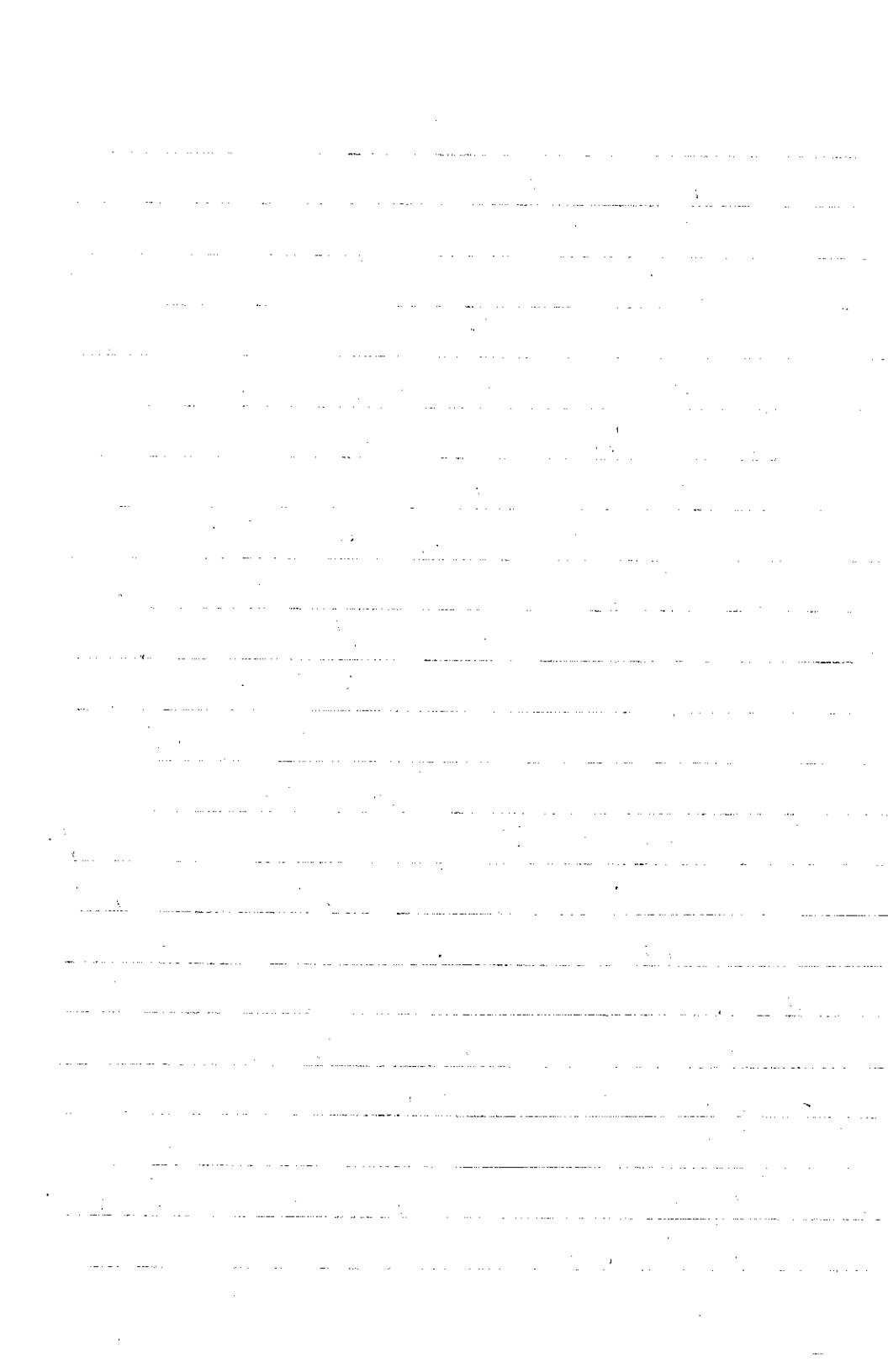
A preference for the right is deeply ingrained in the Bible.

When we are venerating icons in Church, after venerating the central one, we venerate those on the right and then those on the left.

This applies to lighting candles — we always do the right first.

We see this when the priest faces us. He should turn to the right after the consecration, he would normally return to facing east to the left so as not to turn his back to Christ on the Holy Table.

If lighting candles on the tetrapod or, before the iconostasis or on the Holy Table we always start on the right and closest to the tabernacle or royal doors.



With regard to customs outside of the temple, they are basically the same as in the temple.

- We pray facing east and should try to set our icon corner in or near the east.
- We cross ourselves upon arising, going to bed, when starting on a journey, when passing in front of a temple.
- We may also make the sign of the cross upon our beds and even our food.
- It is also customary to kiss all sacred objects & icons - crosses - Bibles - prayer books - prayer ropes or beads.

→

H.H. March 14, 2018.

Jesus, in referring to his disciples inability to cast out a demon said that "This kind can only be cast out through prayer & fasting."

Fasting, then, becomes an important tool for casting out really difficult demons. Implicitly, those who don't fast might have difficulty with handling these sorts of demons.